



Ripon Close, Chippenham
Chippenham, SN14 0QF



1 Ripon Close, Chippenham, Wiltshire, SN14 0QF

A well presented, three bedroom semi detached family house with well enclosed garden, and driveway parking, which is situated on an established and popular development. Offered with Tenants In-Situ.

- Three Bedroom Semi-Detached Home
- Open Living / Dining Arrangement
- Private Rear Garden
- Off-Road Driveway Parking
- Long Term Sitting Tenants
- Offered with Tenants In-Situ

Guide Price £249,950



INVESTORS ONLY!

A well presented, three bedroom semi detached family home with enclosed private garden, and driveway parking, which is situated on an established and popular development within walking distance of schools and amenities.

The property offers well proportioned accommodation over two floors comprising; entrance hall, sitting room part open plan to dining area, which opens onto the rear garden via sliding doors, kitchen, two double bedrooms, one single bedroom, and family bathroom with separate W/C.

Externally there is driveway parking for numerous vehicles to the front and a level, well enclosed garden to the rear with lawned area and decked seating area.

Offered for Sale with Tenants In-Situ.

Situation

The property is within walking distance of the town and all amenities, including a public library, the pleasant Monkton Park with a nine hole golf course, riverside walks and cycleways. There is convenient pedestrian access to the mainline railway station (London Paddington - approx. 75 minutes). The M4 motorway, the A4 and the A420 offer excellent commuting by car to the major centres of Bath, Bristol, Swindon & London. There is a good choice of private schooling and Chippenham also offers excellent secondary and primary schools, together with further education at Wiltshire College.

Property Information

Tenure: Freehold

Council Tax Band: C

EPC Rating: D

Mains gas, electric, water and drainage.

Gas central heating.

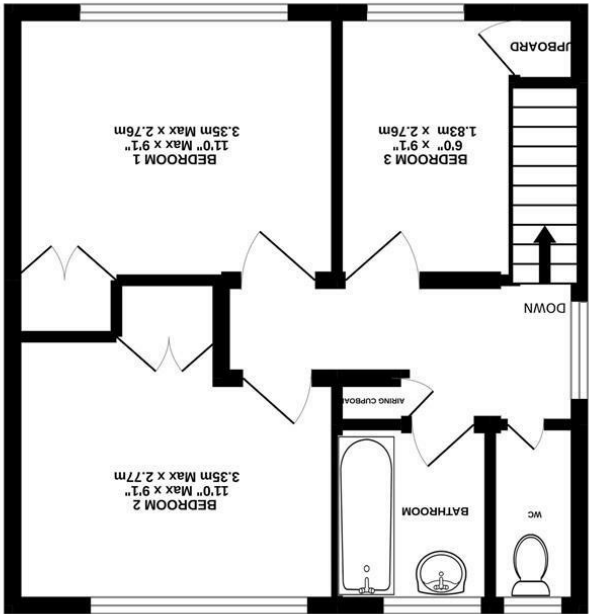
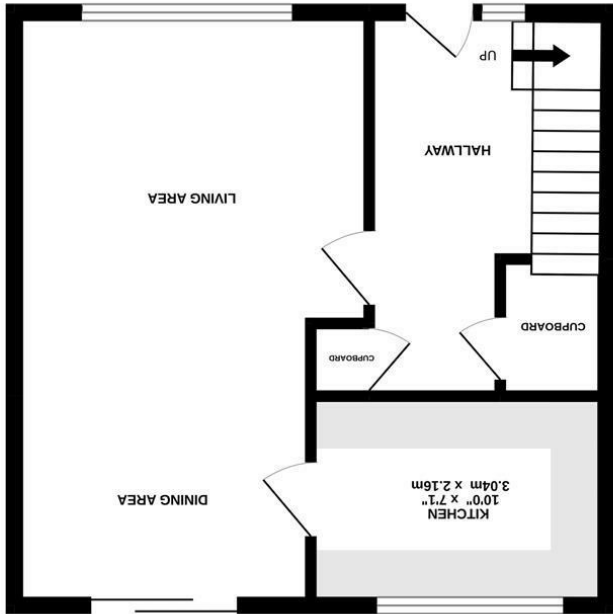


www.strakers.co.uk

Email: chippenham@strakers.co.uk

Tel: 01249 652717

1 Ripon Close, Chippenham, Wiltshire, SN14 0QF



Schematic Diagram only - Not to scale
Made with Mictopix ©2022